



Texas State Flower - Bluebonnet

Label the Parts of a Bluebonnet

Plants have different parts. These parts work together to help a plant grow, make food, get water, and make new plants.

1. Use the word bank to label the bluebonnet plant

Word Bank

Leaf Stem Flower Roots Seed Pod



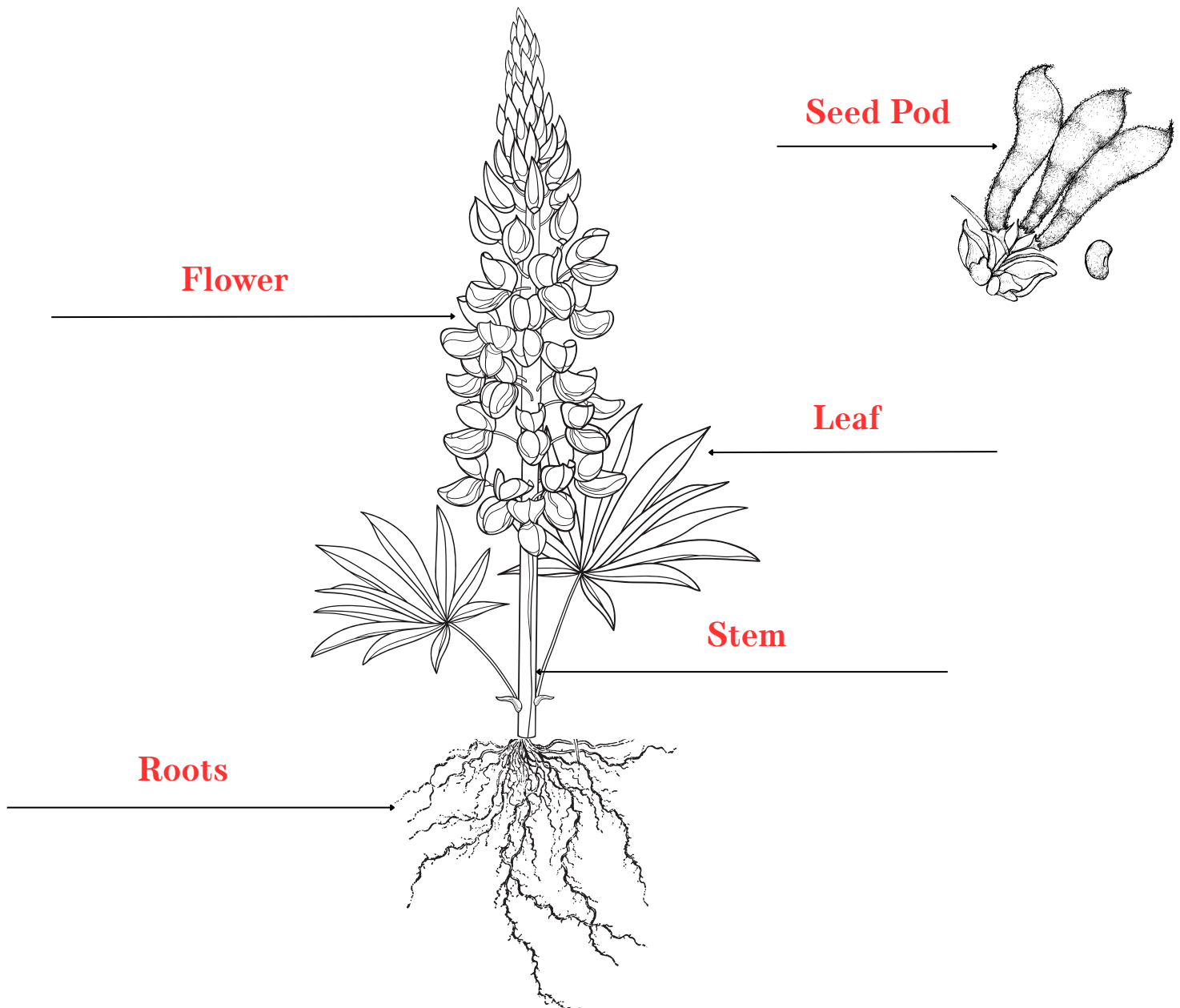
Label the Parts of a Bluebonnet

Plants have different parts. These parts work together to help a plant grow, make food, get water, and make new plants.

1. Use the word bank to label the bluebonnet plant

Word Bank

Leaf Stem Flower Roots Seed Pod



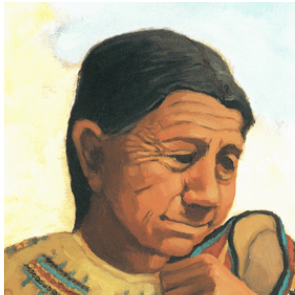
Precious Gifts

Draw a line to match each character to their precious item.

Circle the character who sacrificed their precious item.



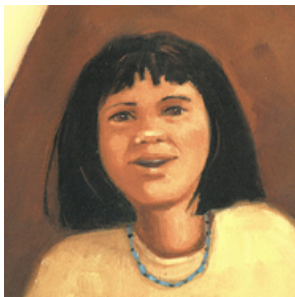
Little Bison



River Crane



Spirit Talker



The Little Girl



Returning Wolf



Shield



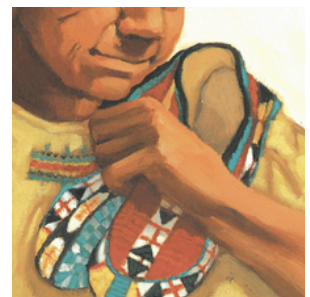
Doll



Vest



Pipe

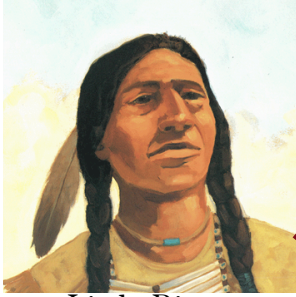


Shoes

Precious Gifts

Draw a line to match each character to their precious item.

Circle the character who sacrificed their precious item.



Little Bison



River Crane



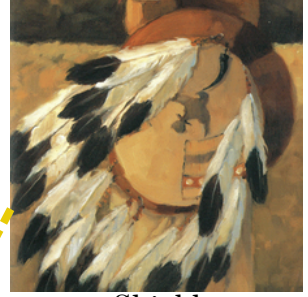
Spirit Talker



The Little Girl



Returning Wolf



Shield



Doll



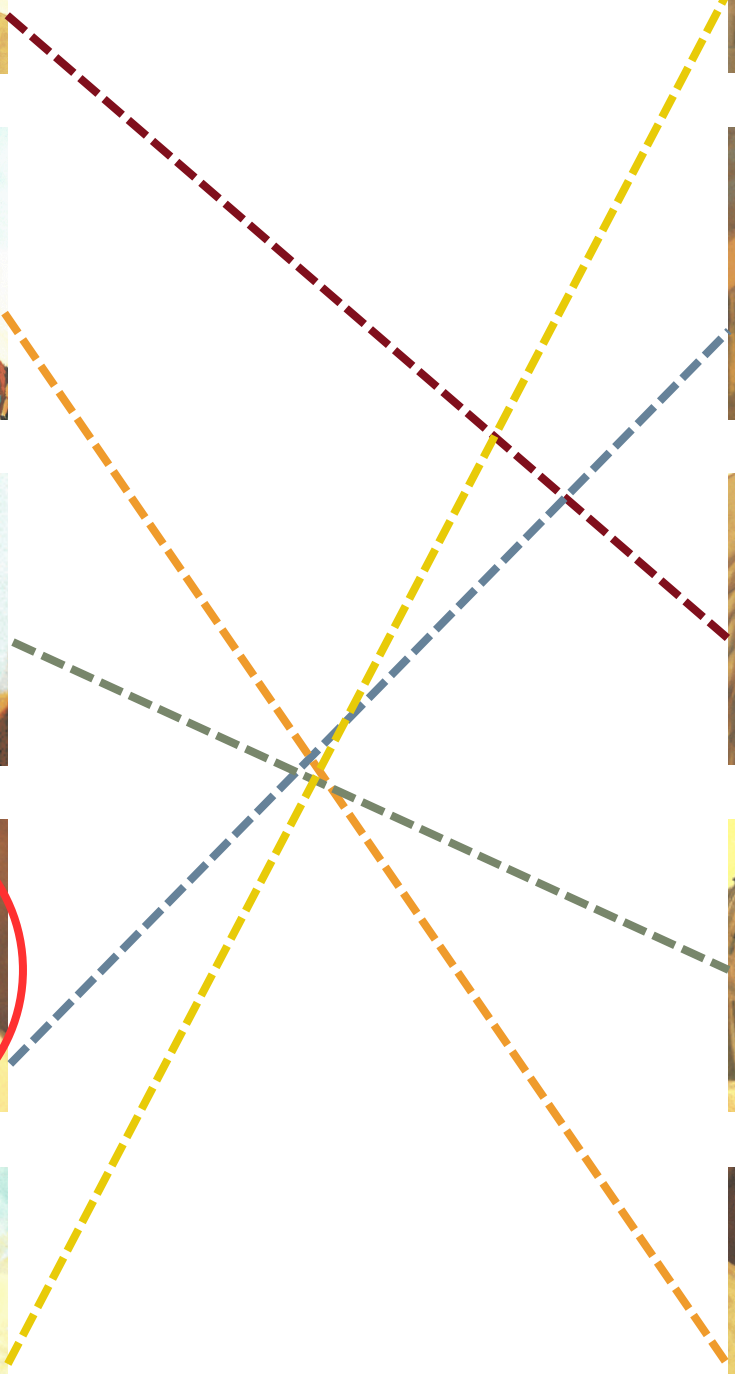
Vest



Pipe



Shoes



My Most Precious Thing

In the story *Bluebonnet Girl* by Michael Lind, the people of the tribe are asked to sacrifice their most precious possession. Only the little girl was willing to sacrifice her special doll to help bring an end to the drought.

What is your most precious possession?

Draw a picture of your special item:



Why is this item special to you?:

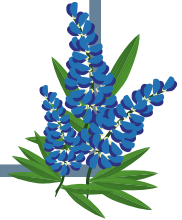
Texas Bluebonnets

Word Search Puzzle

Find and circle the words from the word bank in the puzzle below



lupinus texensis	bluebonnet	butterfly
seed pods	pioneer	symbol
legend	buffalo clover	conejo
texas	wolf flower	bees



Z I W B T P V K P U L G N B I E V R G C
I O X I M P U C A H U E X P U Y N B J B
D X B P I O N E E R P L A S M L E K G Z
T T W H Y B J N X T I E B Y N S Q Z N F
B V Q M S U V U Y Q N G X A S M W C Q P
Q I A B P F C Y C P U E E A E N M Y W A
Y B H Z E L D Q I L S N M R N C M L E I
L I A S B E C F G P T D Z S Y M B O L N
Y P B S U N S J T L E H T K W G N E Z X
S U L E F B B L L F X W H O K F Q Q O W
Z R U E F O W M F R E P Q X K A V M B V
O Z E D A V O T F N N P A D H D I K I S
E P B P L D L R F M S B U T T E R F L Y
W L O O O I F X Q B I Z N I I C N P I Z
C U N D C T F Y U Q S M K X L R C Y A Y
L D N S L R L J S Q F C A V Q T O R R R
E G E D O W O T R P Z H X Y M K N S F O
T I T O V H W B H D T S Q N Y T E N U T
W Q B I E E E Z S Y N F X G T L J Y F V
T L H M R B R T E X A S C U L S O S N D

Texas Bluebonnets

Word Search Puzzle

Find and circle the words from the word bank in the puzzle below



lupinus texensis

bluebonnet

butterfly

seed pods

pioneer

symbol

legend

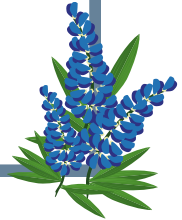
buffalo clover

conejo

texas

wolf flower

bees



Z I W B T P V K P U L G N B I E V R G C
I O X I M P U C A H U E X P U Y N B J B
D X B P I O N E E R P L A S M L E K G Z
T T W H Y B J N X T I E B Y N S Q Z N F
B V Q M S U V U Y Q N G X A S M W C Q P
Q I A B P F C Y C P U E E A E N M Y W A
Y B H Z E L D Q I L S N M R N C M L E I
L I A S B E C F G P T D Z S Y M B O L N
Y P B S U N S J T L E H T K W G N E Z X
S U L E F B B L L F X W H O K F Q Q O W
Z R U E F O W M F R E P Q X K A V M B V
O Z E D A V O T F N N P A D H D I K I S
E P B P L D L R F M S B U T T E R F L Y
W L O O O I F X Q B I Z N I I C N P I Z
C U N D C T F Y U Q S M K X L R C Y A Y
L D N S L R L J S Q F C A V Q T O R R R
E G E D O W O T R P Z H X Y M K N S F O
T I T O V H W B H D T S Q N Y T E N U T
W Q B I E E E Z S Y N F X G T L J Y F V
T L H M R B R T E X A S C U L S O S N D



Bluebonnet Girl Story Map

Directions: Fill in the parts of the story, then the lesson or moral.

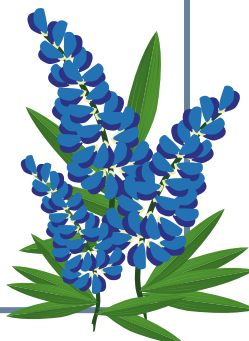
Beginning

Middle

End



Lesson or Moral



Narrative Poetry

Bluebonnet Girl by Michael Lind is a **narrative poem**. Narrative poems are poems that tell a story. Just like a story, these poems have a beginning, a middle, and an end. Some famous narrative poems are “Paul Revere’s Ride” by Henry Wadsworth Longfellow, “Casey at the Bat” by Ernest Thayer, and “The Raven” by Edgar Allan Poe.

Complete the narrative poem below. Make sure that your poem has a beginning, middle, and end.

On My Way to School by _____

On my way to school today
I could not believe my eyes.
I saw something so very strange
it took me by surprise!

Draw a picture of what you saw on your way to school.



Make Your Own Myth

Myths are traditional stories that are told in an attempt to explain some natural or social phenomenon that could not be explained by science.

Write your own myth to explain the origins of a plant, animal, or other natural occurrence.

Example: “How the Coyote Got His Howl” or “Why the Opossum Has a Bare Tail”

Title: _____

This image shows a single sheet of white paper with horizontal ruling lines. The lines are evenly spaced and run across the width of the page. There are no margins, text, or other markings on the paper.